

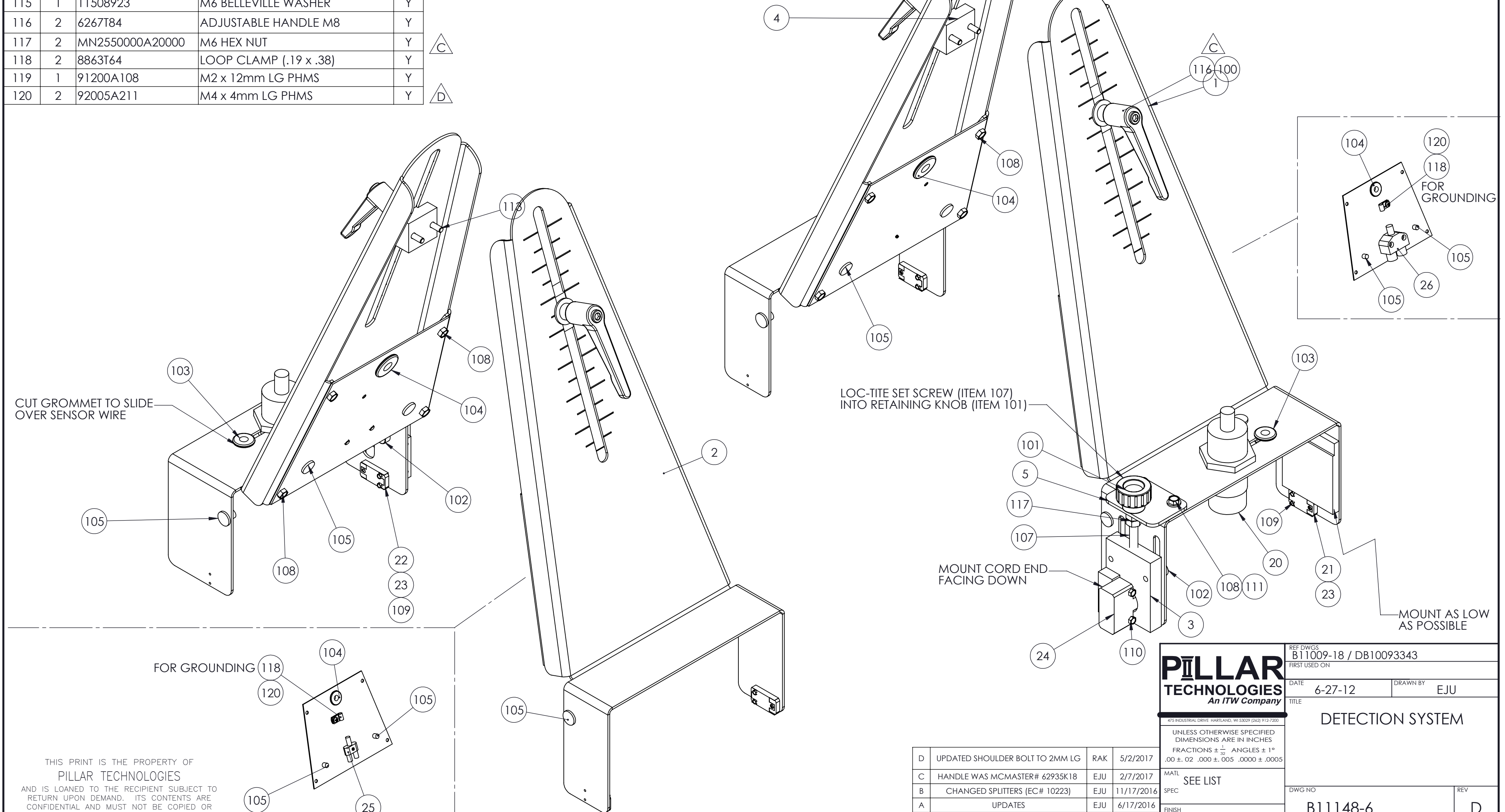
ITEM	QTY.	PART NUMBER	DESCRIPTION	EXP
100	2	92141A030	WASHER .38ID x .75 OD STAINLESS	Y
101	1	62935K17	RETAINER KNOB M6 MCMMASTER# 62935K17	Y
102	2	90278A302	6MM DIA x 2MM LG SHOULDER BOLT MCMMASTER #90278A302	Y
103	1	9307K14	GROMMET .25 ID MCMMASTER# 9307K14	Y
104	2	9307K16	GROMMET .31 ID MCMMASTER# 9307K16	Y
105	9	7566k36	WIRE TIE ANCHOR MCMMASTER# 7566K36	Y
106	2	MX2580025A20000	M8 x 25mm LG SET SCREW	Y
107	1	MX2550050A20000	M6 x 50mm LG SET SCREW	Y
108	10	M82530006A400000	M4 x 6mm LG HHCS	Y
109	8	0131595	M2 x 4mm LG PHMS	Y
110	2	M82510025A20000	M3 x 25mm LG HHCS	Y
111	2	MW6340000A20000	M4 FLAT WASHER	Y
112	2	MS2530018A20000	M4 x 18mm LG SHCS	Y
113	4	MS2530016A20000	M4 x 16 LG SHCS	Y
115	1	11508923	M6 BELLEVILLE WASHER	Y
116	2	6267T84	ADJUSTABLE HANDLE M8	Y
117	2	MN2550000A20000	M6 HEX NUT	Y
118	2	8863T64	LOOP CLAMP (.19 x .38)	Y
119	1	91200A108	M2 x 12mm LG PHMS	Y
120	2	92005A211	M4 x 4mm LG PHMS	Y

NOTES:

1. RUN ALL WIRES UNDER COVER AND OUT GROMMET (ITEM 104)
ALLOW ENOUGH SLACK IN CABLES TO POWER SUPPLY
FOR ADJUSTMENT (APPROX. 8.00in)
2. REFERENCE ITEM 75 (G2099-7) ENCODER MOUNTING INSTRUCTIONS
ENCODER IS TO BE MOUNTED BY CUSTOMER ONTO CUSTOMER
CONVEYOR UNLESS ORDER INCLUDES CONVEYOR
IF ORDER INCLUDES CONVEYOR PILLAR IS TO MOUNT THE ENCODER
3. ZIP TIE ALL WIRES TO PUSH BUTTONS (ITEM 105)

IEWS ARE ROTATED 180° FROM EACH OTHER

ITEM	QTY.	PART NUMBER	DESCRIPTION	EXP
1	1	D203219	SENSOR MOUNTING BRACKET	N
2	1	D203220	SENSOR MOUNTING BRACKET	N
3	1	D201350	MOUNTING BLOCK (LOOSE CAP)	N
4	2	D201470	MOUNTING BLOCK	N
5	1	D203221	MOUNTING PLATE	N
20	1	PP1006-96	MISSING FOIL SENSOR	N
21	2	PP1037-49	SENSOR (EMITTER)	N
22	2	PP1037-50	SENSOR (RECIEVER)	N
23	2	PP1037-51	APERTURE	N
24	1	PP1037-52	LOOSE CAP SENSOR	N
25	1	PP358-670	2 : 1 SPLITTER	N
26	1	PP358-674	4:1 SPLITTER	N
28	1	PP1009-217	ENCODER (10mm BORE)	N
29	1	PP358-673	ENCODER CABLE	N
75	1	G2099-7	ENCODER MOUNTING INSTRUCTIONS	REF



THIS PRINT IS THE PROPERTY OF
PILLAR TECHNOLOGIES
AND IS LOANED TO THE RECIPIENT SUBJECT TO
RETURN UPON DEMAND. ITS CONTENTS ARE
CONFIDENTIAL AND MUST NOT BE COPIED OR
SUBMITTED TO OUTSIDE PARTIES FOR
USE OR EXAMINATION

REV	DESCRIPTION	APP'D	DATE
D	UPDATED SHOULDER BOLT TO 2MM LG	RAK	5/2/2017
C	HANDLE WAS MCMMASTER# 62935K18	EJU	2/7/2017
B	CHANGED SPLITTERS (EC# 10223)	EJU	11/17/2016
A	UPDATES	EJU	6/17/2016

PILLAR TECHNOLOGIES

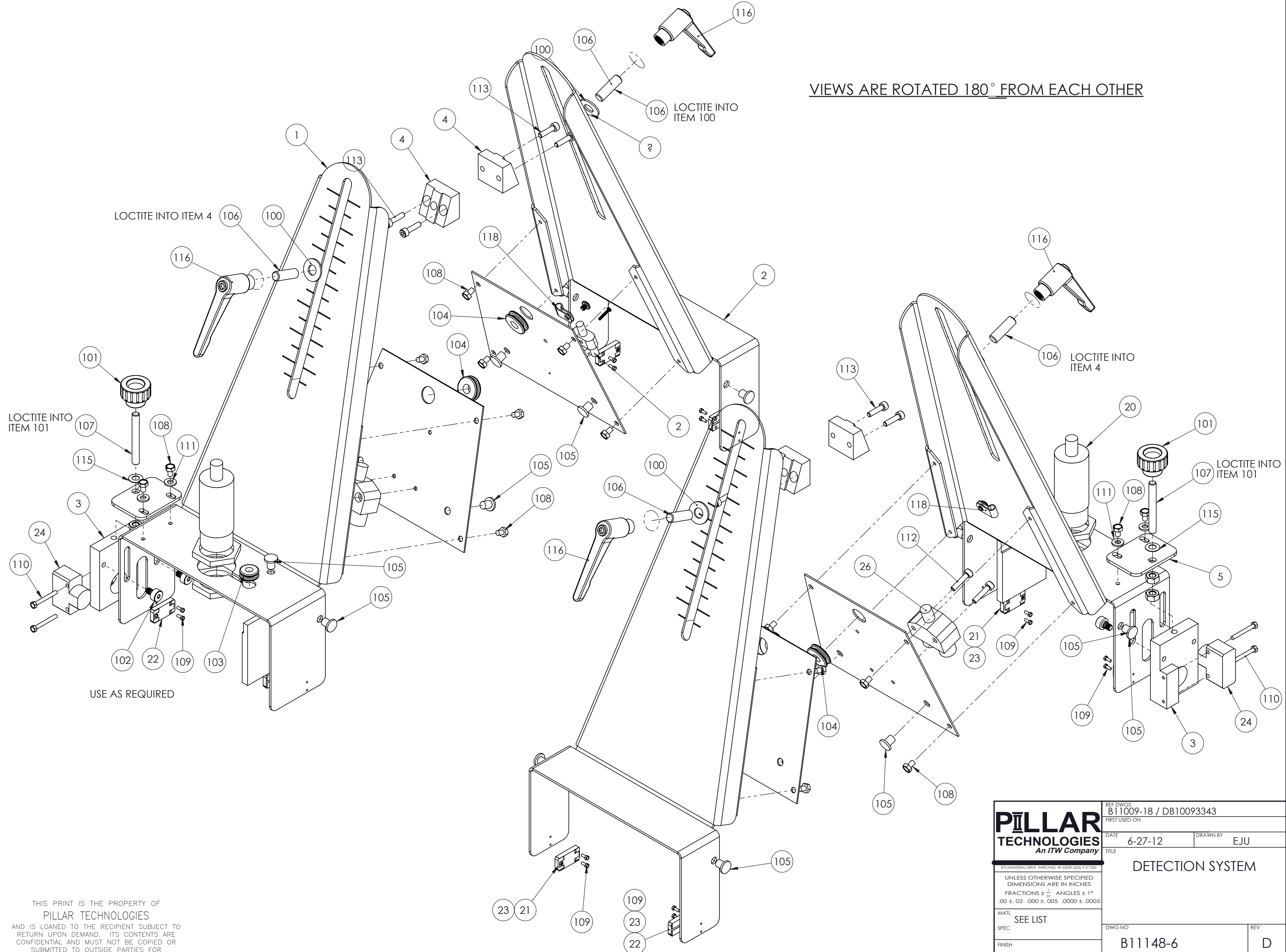
An ITW Company

475 INDUSTRIAL DRIVE HARTLAND, WI 53029 (262) 912-7200

UNLESS OTHERWISE SPECIFIED
DIMENSIONS ARE IN INCHES
FRACTIONS ± 1/32 ANGLES ± 1°
.00 ± .02 .000 ± .005 .0000 ± .0005

REF DWGS B11009-18 / DB10093343	
DATE 6-27-12	DRAWN BY EJU
TITLE DETECTION SYSTEM	
DWG NO B11148-6	REV D
SCALE 1:2	SHEET 1 OF 2

IEWS ARE ROTATED 180° FROM EACH OTHER



THIS PRINT IS THE PROPERTY OF
PILLAR TECHNOLOGIES
AND IS LOANED TO THE RECIPIENT SUBJECT TO
RETURN UPON DEMAND. ITS CONTENTS ARE
CONFIDENTIAL AND MUST NOT BE COPIED OR
SUBMITTED TO OUTSIDE PARTIES FOR
USE OR EXAMINATION

PILLAR TECHNOLOGIES An ITW Company <small>475 INDUSTRIAL DRIVE HARTFORD, WI 53029 (262) 912-7200</small>	REF DWGS B11009-18 / DB10093343	
	FIRST USED ON	
MATL SPEC	DATE 6-27-12	DRAWN BY EJU
FINISH SPEC	TITLE DETECTION SYSTEM	
	DWG NO B11148-6	REV D
	SCALE 1:2	SHEET 2 OF 2